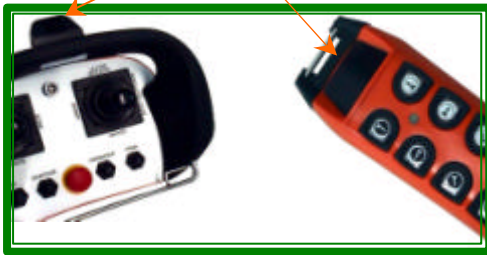


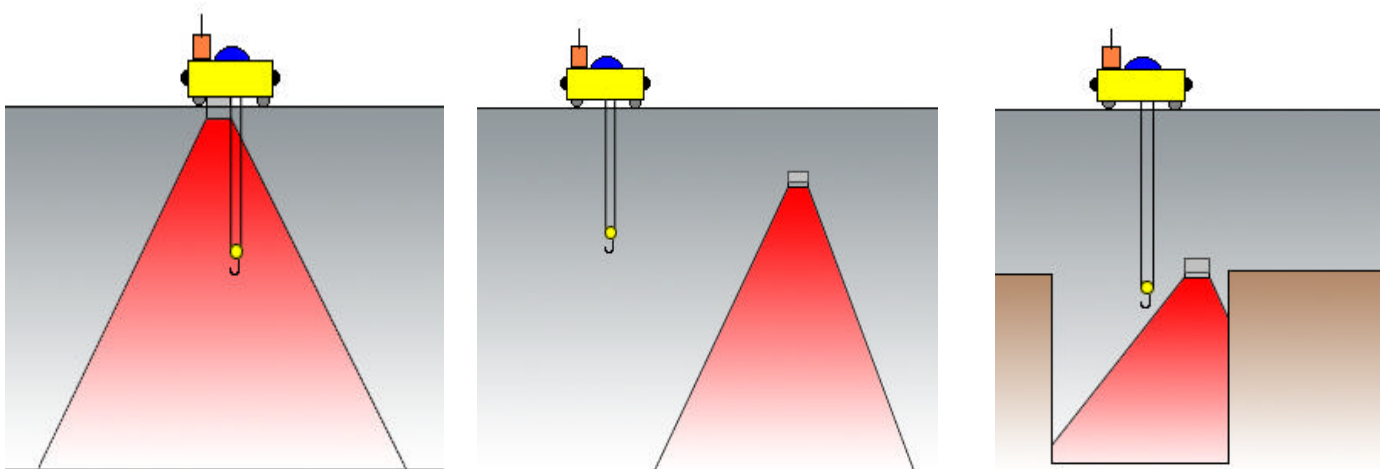
The TM60 remote control sets come with a range limitation option. With this option the system can detect if the transmitter is outside a certain working area and disconnects the controls if this is the case.

The system is made up of one or more **LA60** infrared transmitters, fitted either onto the machine under control or in different fixed spots, in such a way that the desired area for delimitation is fully covered. The remote control transmitters have a sensor, which receives the information from the **LA60** transmitter. When the operator is located outside the working area, the system deactivates the outputs, while keeping ON the main contactor, due to that the system maintains the RF link. Once the operator returns to the working area the system automatically becomes operable once again.

SENSOR

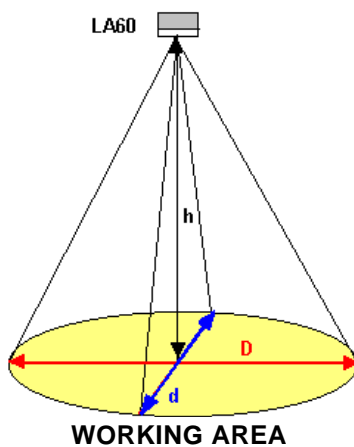


Example applications:



The **LA60** transmitter generates modulated IR radiation with an identity code, which allows identification by the sensor. This enables several systems to coexist in the same working area.

The area covered by of an **LA60** transmitter depends on how far it is located from the ground. The size of the working area covered by a transmitter is approximately as follows:



h (m)	D (m)	d (m)
6	24	6
8	32	8
10	40	10
12	48	12
14	56	14
16	64	16
18	68	18
20	70	20

If the working area covered by a transmitter is wider enough, additional transmitters can be installed to work as slaves to the master transmitter.

LA60 Technical specifications

Power supply	48, 115, 230 Vac \pm 10%; 50/60 Hz
Working temperature	-20 a + 65°C
Protection	IP55

SEDE CENTRAL

Ikusi – Angel Iglesias, S.A.
Polígono 27 N° 30 (Martutene)
Apartado 1320
20080 San Sebastián

Tel.: + 34 943 44 88 00

Fax: + 34 943 44 88 16

E-mail: tlc@ikusi.es

www.ikusi.com